



*Product shown is representation only

Casement Windows

Inspire your living space with Platinum Series high performance, energy efficient windows and doors.

Casement windows provide a generous opening and allow cool refreshing breezes into your home whilst maximising the view of your garden and other surroundings.

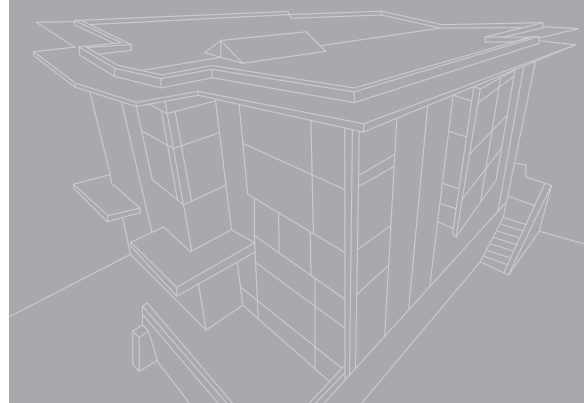
The Platinum Casement window caters for Australia's diverse climate with the option of single or double glazing.

The window panel is cut at 45 degrees, which creates clean lines as well as an attractive appearance.

For effortless and trouble free operation the Platinum Casement window utilises uncompromising high performance mechanisms and components.

Maximum Product Performance for window size 2400mm x 900mm

- Serviceability Wind Pressure: 1000 Pa
- Ultimate Wind Pressure: 2300 Pa
- Water Penetration Resistance: 450 Pa
- Overall Classification: N3



CAPRAL

Other features include:

- Seals that run along the perimeter of the window panel and moulded santoprene gaskets enhance the window's energy performance, and prevent water and air leakage.
- For those homes with a first or second floor construction, an optional window opening restrictor can provide a safe way to open your window to an agreed width, ideal for families with young children.
- Solid extruded corner stakes provide unrivalled strength.
- An aluminium frame that conceals most of the winder, leaving you with a clean and enhanced appearance.
- The double glazed option accommodates Insulated Glass (IG) units of up to 25 mm thick for an energy efficient household.
- Optional jamb or sill mounted opener provides access flexibility.
- Stays provide access to outside window for cleaning without scaffolding.



HIGH PERFORMANCE CASEMENT WINDOWS



Casement operator and stays.



Optional jamb mounted operator.



Fully adjustable sash keeper.



Substantial mitred sash profiles.

CAPRAL

Our distribution offices are located at:

Victoria

77-87 Fillo Drive, Somerton 3062
T 03 9930 1500, F 03 9305 1365

New South Wales

C1/107 Erskine Park Road,
Erskine Park NSW 2759
T 02 9670 8500, F 02 9670 8555

Queensland

71 Ashburn Road, Bundamba 4304
T 07 3816 7000, F 07 3816 7111

North Queensland

15 Rendle Street, Aitkenvale 4814
T 07 4759 1999, F 07 4775 7874

South Australia

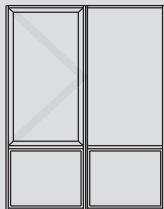
38 Cavan Road, Dry Creek 5094
T 08 8359 6000, F 08 8359 6100

Western Australia

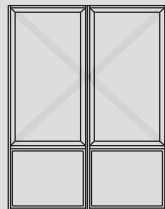
17 Inspiration Drive, Wangara 6065
T 08 9302 8500, F 08 9302 4390

A division of Capral Aluminium Limited.
ABN 78 004 213 692

Available configurations include:



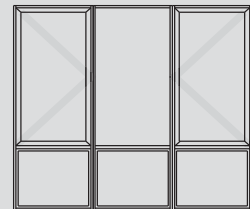
Casement and fixed over double fixed light



Double casement over double fixed light



Casement over fixed light



Double casement with centre fixed light over triple fixed light

Contact your local Platinum dealer for further details.

